

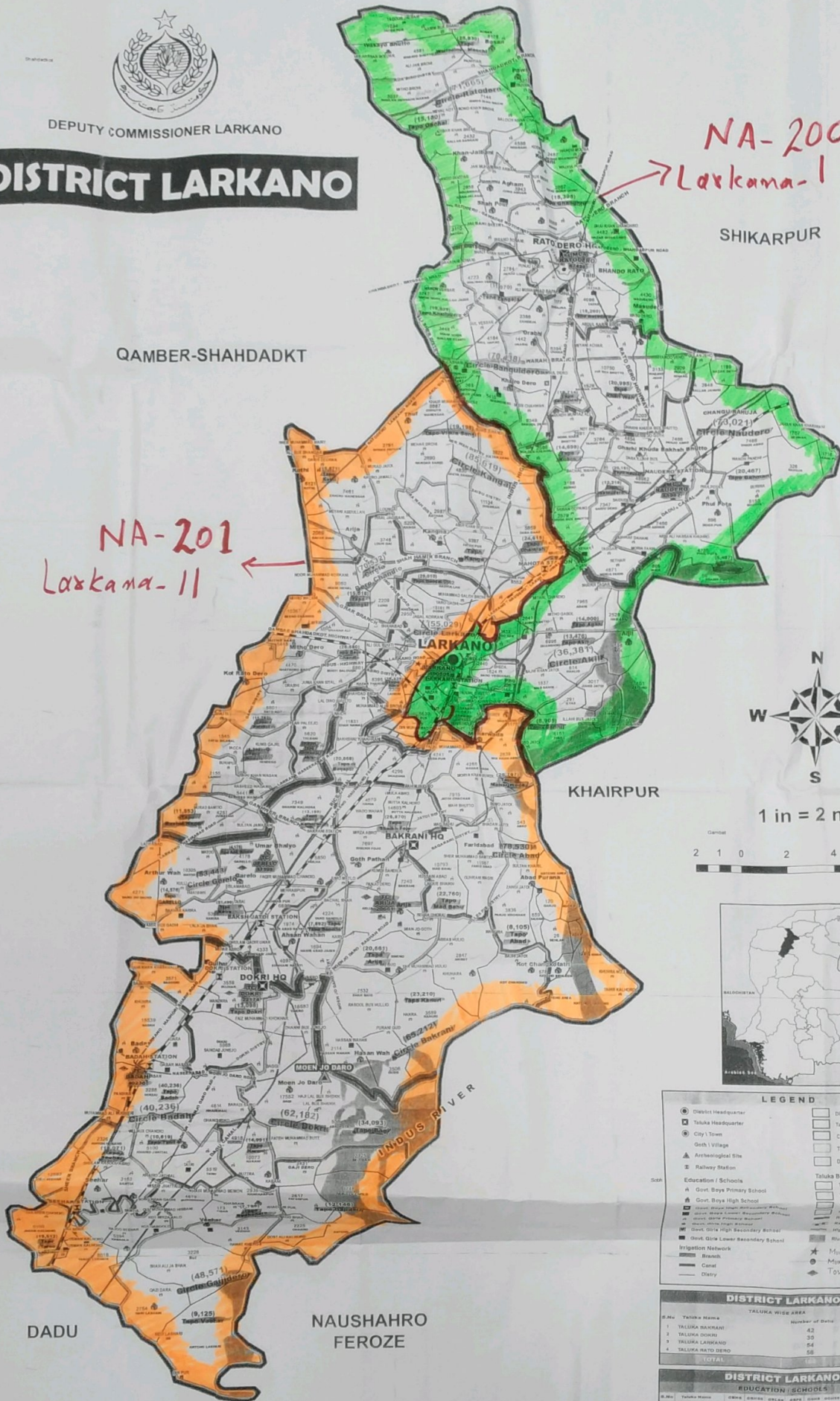
67°55'0"E 61°0'0"E 68°5'0"E 68°10'0"E 68°15'0"E 68°20'0"E 68°25'0"E 68°30'0"E

27°55'0"N 27°50'0"N 27°45'0"N 27°40'0"N 27°35'0"N 27°30'0"N 27°25'0"N 27°20'0"N 27°15'0"N 27°10'0"N

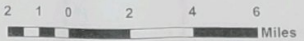


DEPUTY COMMISSIONER LARKANO

DISTRICT LARKANO



1 in = 2 miles



LEGEND

- District Headquarter
- Taluka Headquarter
- City / Town
- △ Archaeological Site
- ✈ Railway Station
- Govt Boys Primary School
- Govt Boys High School
- Govt Girls Primary School
- Govt Girls High School
- Govt Old Lower Secondary School
- Canal
- Branch
- Diary

□ District Boundary
 □ Taluka / Tehsil Boundary
 □ Circle Boundary
 □ Talpa Boundary
 □ Deh Boundary
 □ Taluka Boundary
 □ Taluka Dakhil
 □ Taluka Larkana
 □ Taluka Bakrani
 □ Taluka Moenjo Daro
 □ Taluka Naushahro Feroze
 □ Taluka Dadu
 □ Taluka Shikarpur
 □ Taluka Khairpur
 □ Taluka Qamber Shahdadkot

DISTRICT LARKANO TALUKA WISE AREA

S.No.	Taluka Name	Number of Dehs	Area (in Acres)
1	TALUKA BAKRANI	42	102882.27
2	TALUKA DOKRI	30	122866.16
3	TALUKA LARKANO	54	140879.17
4	TALUKA RATO DERO	58	148177.16
TOTAL			400,005.76

DISTRICT LARKANO EDUCATION / SCHOOLS

S.No.	Taluka Name	GNPS	BOPS	UBSAs	GOPS	GOHS	GOSSAs	GOSSAs	GOSSAs	GOSSAs	GOSSAs	TOTAL
1	TALUKA BAKRANI	1	2	7	20	2	1	1	1	1	1	34
2	TALUKA DOKRI	1	1	1	1	1	1	1	1	1	1	11
3	TALUKA LARKANO	11	3	6	17	3	1	1	1	1	1	57
4	TALUKA RATO DERO	2	1	1	1	1	1	1	1	1	1	13
TOTAL											116	

67°55'0"E 61°0'0"E 68°5'0"E 68°10'0"E 68°15'0"E 68°20'0"E 68°25'0"E 68°30'0"E



DEPUTY COMMISSIONER LARKANO

DISTRICT LARKANO

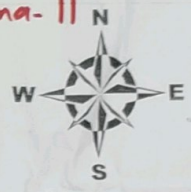
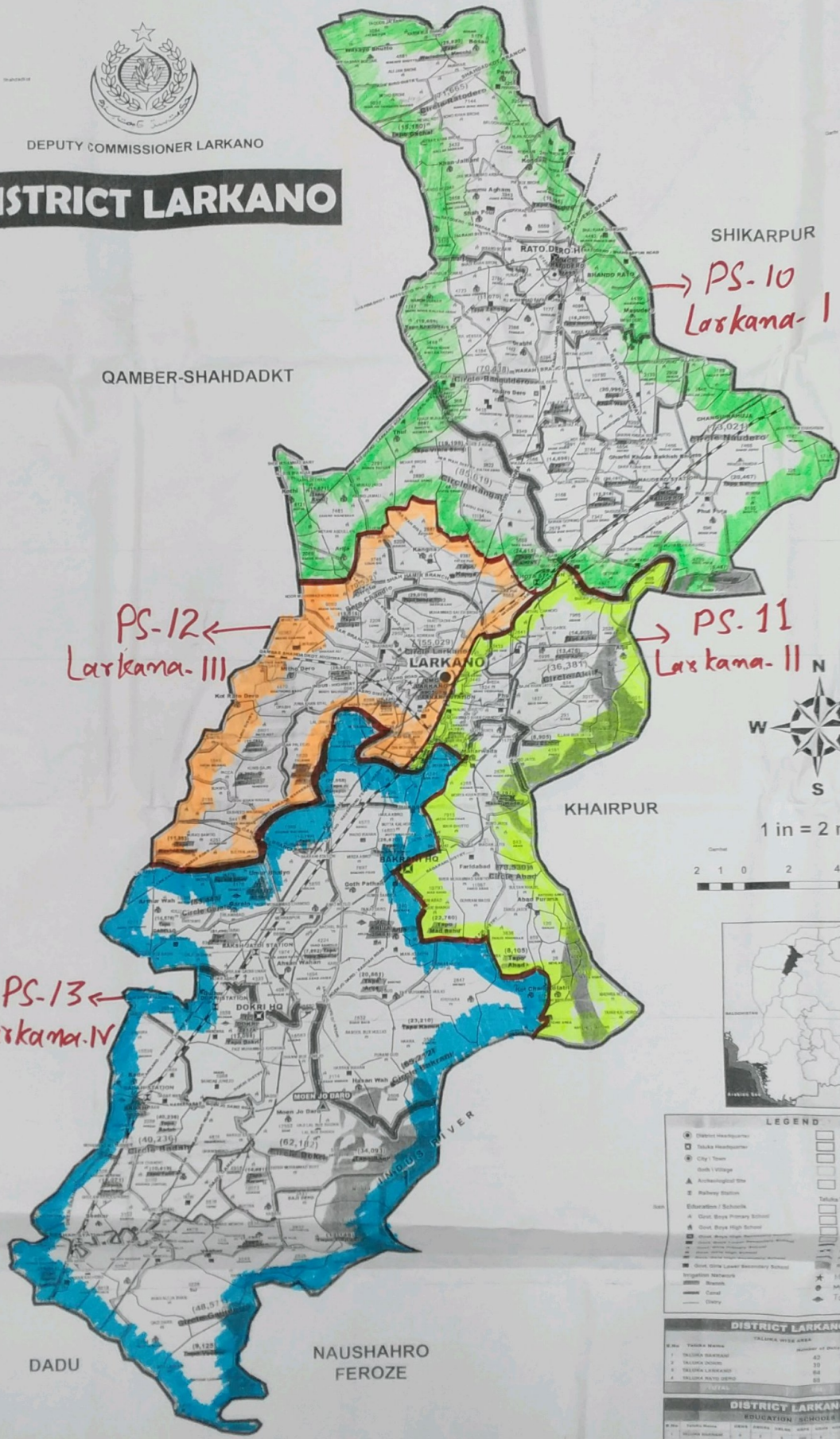
QAMBER-SHAHDADKT

SHIKARPUR

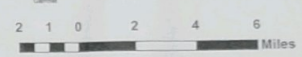
PS-12
Larkama-III

PS-11
Larkama-II

PS-13
Larkama-IV



1 in = 2 miles



LEGEND

● District Headquarters	□ District Boundary
□ Taluka Headquarters	□ Taluka / Talot Boundary
● City / Town	□ Circle Boundary
● Sub-Township	□ Taluk Boundary
▲ Archaeological Site	□ Taluka Sub-township
■ Railway Station	□ Taluka Village
■ Education / Schools	□ Taluka Sub-township
■ Govt. Boys Primary School	□ Taluka Village
■ Govt. Boys High School	□ Taluka Sub-township
■ Govt. Girls Primary School	□ Taluka Village
■ Govt. Girls High School	□ Taluka Sub-township
■ Govt. Girls Lower Secondary School	□ Taluka Village
■ Irrigation Network	□ Taluka Sub-township
■ Main Road	□ Taluka Village
■ Canal	□ Taluka Sub-township
■ Dairy	□ Taluka Village
■ Municipal Corporation	
■ Multi-caste Council	
■ Town Committee	

DISTRICT LARKANO

Taluka Name	Number of Talukas	Area (in Sq. Miles)
Taluka Dabhoi	12	10000.00
Taluka Dabhoi	30	10000.00
Taluka Dabhoi	60	10000.00
Taluka Dabhoi	60	10000.00
TOTAL		

DISTRICT LARKANO

Taluka Name	Primary	High	Lower Secondary	Upper Secondary	Technical	Total
Taluka Dabhoi	12	12	12	12	12	60
Taluka Dabhoi	30	30	30	30	30	150
Taluka Dabhoi	60	60	60	60	60	300
Taluka Dabhoi	60	60	60	60	60	300
TOTAL						

67°55'0"E 68°0'0"E 68°5'0"E 68°10'0"E 68°15'0"E 68°20'0"E 68°25'0"E 68°30'0"E

27°55'0"N
27°50'0"N
27°45'0"N
27°40'0"N
27°35'0"N
27°30'0"N
27°25'0"N
27°20'0"N
27°15'0"N
27°10'0"N

27°55'0"N
27°50'0"N
27°45'0"N
27°40'0"N
27°35'0"N
27°30'0"N
27°25'0"N
27°20'0"N
27°15'0"N
27°10'0"N

DADU

NAUSHAHRO FEROZE

KHAIRPUR

Deputy Commissioner
LARKANO

123

PROPOSAL 3

Annexure - K1

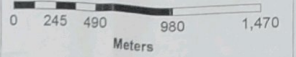


PAKISTAN BUREAU
OF STATISTICS
KARACHI

LARKANA
MUNICIPAL CORPORATION

TALUKA
LARKANA
DISTRICT LARKANA

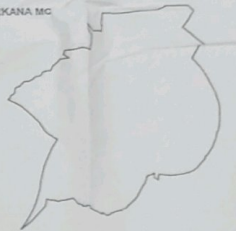
CHARGE 31105 TO 31111



Legend

- Census Urban
- Charge Boundary
- Circle Boundary
- Locations
- Railway
- Main Road
- Street

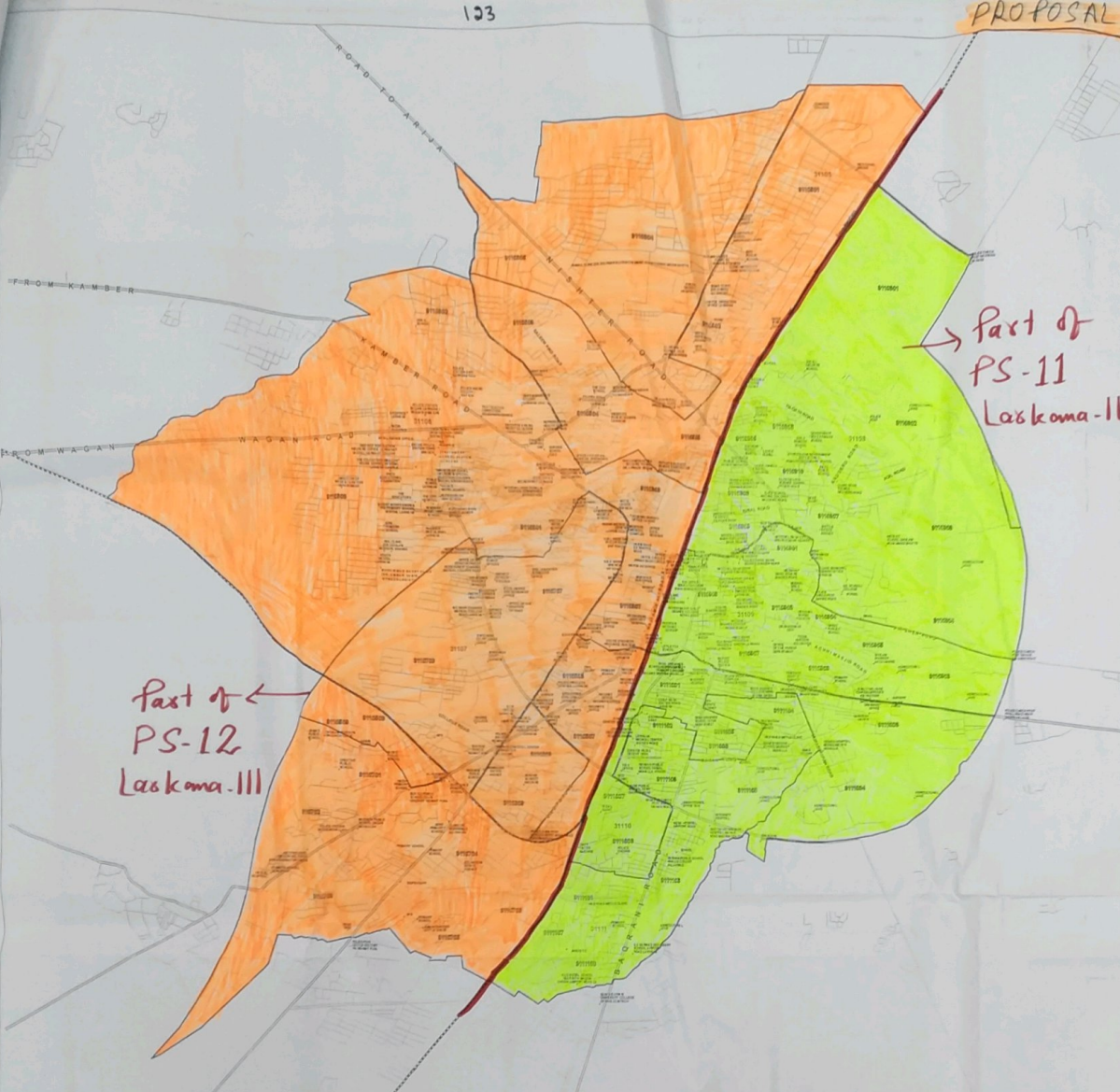
LARKANA MC



[Signature]
DEPUTY COMMISSIONER
LARKANA

Part of
PS-12
Larkana-III

Part of
PS-11
Larkana-II



67°55'0"E 68°0'0"E 68°5'0"E 68°10'0"E 68°15'0"E 68°20'0"E 68°25'0"E 68°30'0"E

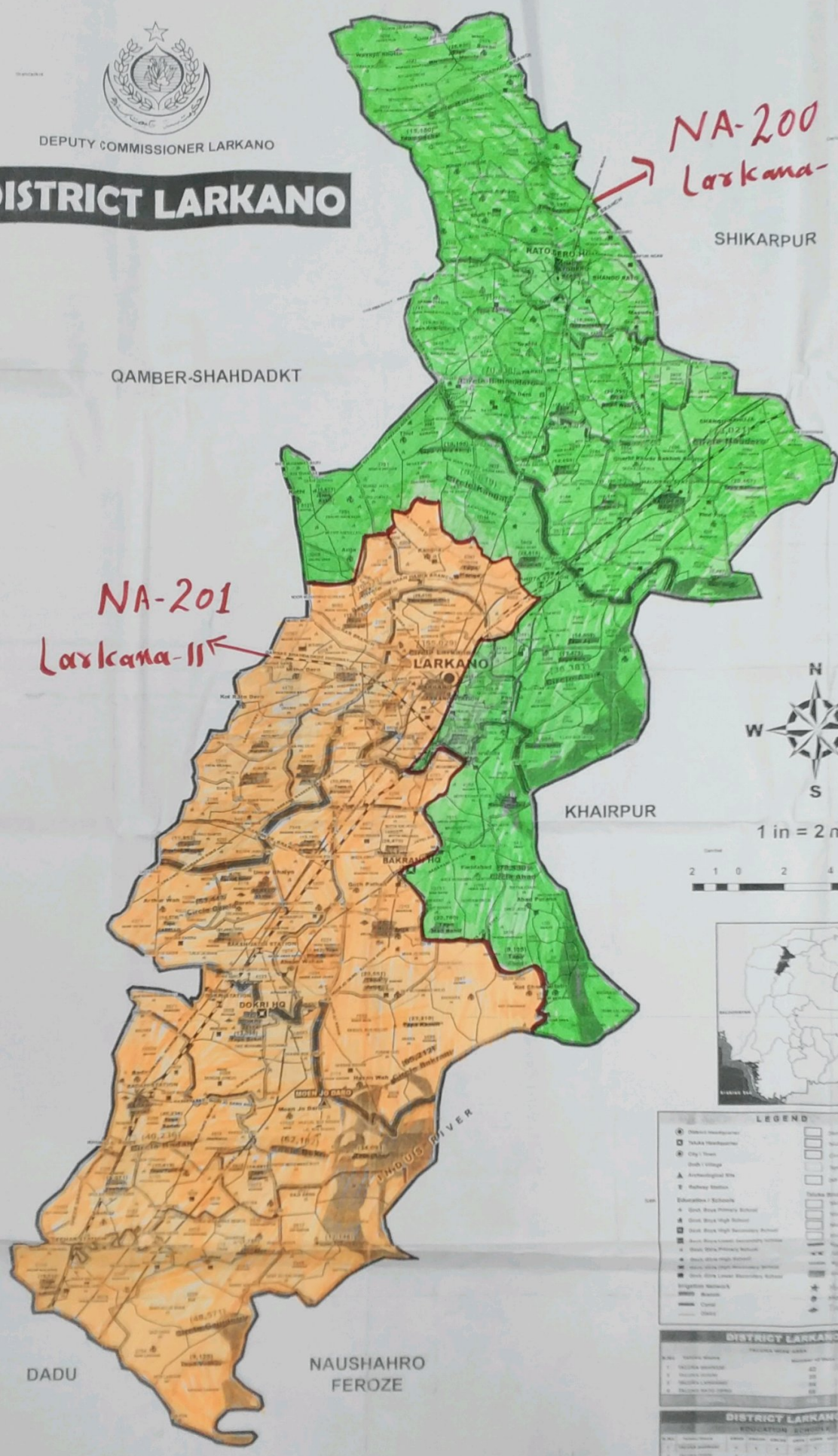
27°55'0"N
27°50'0"N
27°45'0"N
27°40'0"N
27°35'0"N
27°30'0"N
27°25'0"N
27°20'0"N
27°15'0"N
27°10'0"N

27°55'0"N
27°50'0"N
27°45'0"N
27°40'0"N
27°35'0"N
27°30'0"N
27°25'0"N
27°20'0"N
27°15'0"N
27°10'0"N



DEPUTY COMMISSIONER LARKANO

DISTRICT LARKANO

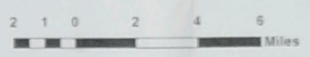


NA-200
Larkana-I

NA-201
Larkana-II



1 in = 2 miles



LEGEND

● District Headquarters	□ District Boundary	□ District Boundary
□ Taluk Headquarters	□ Taluk Boundary	□ Taluk Boundary
○ City / Town	□ City Boundary	□ City Boundary
○ Sub Village	□ Sub Village Boundary	□ Sub Village Boundary
▲ Administrative Site	□ Administrative Site Boundary	□ Administrative Site Boundary
⚡ Railway Station	□ Railway Station Boundary	□ Railway Station Boundary
Education / Schools	□ Education / Schools Boundary	□ Education / Schools Boundary
● Govt. Boys Primary School	□ Govt. Boys Primary School Boundary	□ Govt. Boys Primary School Boundary
● Govt. Boys High School	□ Govt. Boys High School Boundary	□ Govt. Boys High School Boundary
● Govt. Boys Intermediate School	□ Govt. Boys Intermediate School Boundary	□ Govt. Boys Intermediate School Boundary
● Govt. Girls Primary School	□ Govt. Girls Primary School Boundary	□ Govt. Girls Primary School Boundary
● Govt. Girls High School	□ Govt. Girls High School Boundary	□ Govt. Girls High School Boundary
● Govt. Girls Intermediate School	□ Govt. Girls Intermediate School Boundary	□ Govt. Girls Intermediate School Boundary
● Integrated Network	□ Integrated Network Boundary	□ Integrated Network Boundary
● Canal	□ Canal Boundary	□ Canal Boundary
● Road	□ Road Boundary	□ Road Boundary
● District Boundary	□ District Boundary	□ District Boundary
● Taluk Boundary	□ Taluk Boundary	□ Taluk Boundary
● City Boundary	□ City Boundary	□ City Boundary
● Sub Village Boundary	□ Sub Village Boundary	□ Sub Village Boundary
● Administrative Site Boundary	□ Administrative Site Boundary	□ Administrative Site Boundary
● Railway Station Boundary	□ Railway Station Boundary	□ Railway Station Boundary
● Education / Schools Boundary	□ Education / Schools Boundary	□ Education / Schools Boundary
● Govt. Boys Primary School Boundary	□ Govt. Boys Primary School Boundary	□ Govt. Boys Primary School Boundary
● Govt. Boys High School Boundary	□ Govt. Boys High School Boundary	□ Govt. Boys High School Boundary
● Govt. Boys Intermediate School Boundary	□ Govt. Boys Intermediate School Boundary	□ Govt. Boys Intermediate School Boundary
● Govt. Girls Primary School Boundary	□ Govt. Girls Primary School Boundary	□ Govt. Girls Primary School Boundary
● Govt. Girls High School Boundary	□ Govt. Girls High School Boundary	□ Govt. Girls High School Boundary
● Govt. Girls Intermediate School Boundary	□ Govt. Girls Intermediate School Boundary	□ Govt. Girls Intermediate School Boundary
● Integrated Network Boundary	□ Integrated Network Boundary	□ Integrated Network Boundary
● Canal Boundary	□ Canal Boundary	□ Canal Boundary
● Road Boundary	□ Road Boundary	□ Road Boundary

DISTRICT LARKANO

Sl. No.	Constituency	Area (Sq. Miles)	Population	Number of Seats	Area (Sq. Miles)	Population	Number of Seats
1	NA-200 Larkana-I	102	1,000,000	1	102	1,000,000	1
2	NA-201 Larkana-II	102	1,000,000	1	102	1,000,000	1
3	NA-202 Larkana-III	102	1,000,000	1	102	1,000,000	1

DISTRICT LARKANO

Sl. No.	Constituency	Area (Sq. Miles)	Population	Number of Seats	Area (Sq. Miles)	Population	Number of Seats
1	NA-200 Larkana-I	102	1,000,000	1	102	1,000,000	1
2	NA-201 Larkana-II	102	1,000,000	1	102	1,000,000	1
3	NA-202 Larkana-III	102	1,000,000	1	102	1,000,000	1

67°55'0"E 68°0'0"E 68°5'0"E 68°10'0"E 68°15'0"E 68°20'0"E 68°25'0"E 68°30'0"E